



24 Dacre Crescent

Kimpton, SG4 8QJ

A beautiful detached family home with extensions to both the side and rear of the property. The notably impressive Kitchen/Dining/Family room incorporates a well fitted kitchen, island unit and quartz work surfaces and underfloor heating. Whilst On the first floor two of the bedrooms have en suite facilities.

Guide price £850,000

24 Dacre Crescent

Kimpton, SG4 8QJ



- A beautiful extended detached residence
- Great open plan kitchen/dining/family room with bifold doors to the garden and adjoining utility room
- Separate living room and playroom/bedroom five
- Generously proportioned main bedroom with en suite bathroom
- Bedroom two with en suite shower room, two further bedrooms and family bathroom
- South facing rear garden with under cover patio area, enclosed side passage providing additional storage
- Off street parking and front garden
- Highly regarded village with excellent Budgens store/post office, coffee shop and a huge range of clubs and leisure pursuits
- Harpenden (4.4 miles), Wheathampstead (3.2 miles), Hitchin TC (8.3 miles)

GROUND FLOOR

Entrance Hall

Cloakroom

Living Room
15'7 x 11'11 (4.75m x 3.63m)

Play Room/Bedroom 5
13'3 x 10 (4.04m x 3.05m)

Kitchen/Dining/Family Room
24'6 x 19'1 (7.47m x 5.82m)

Utility Room
11'6 x 10'10 (3.51m x 3.30m)

FIRST FLOOR

Landing

Principal Bedroom

19'3 x 10 (5.87m x 3.05m)

En Suite Bathroom

Bedroom Two
11'6 x 10'8 (3.51m x 3.25m)

En Suite Shower Room

Bedroom Three
10' 11 x 10'1 (3.05m 3.35m x 3.07m)

Bedroom Four/study
8'5 x 8'1 (2.57m x 2.46m)

Family Bathroom

EXTERNALLY

Enclosed Side Passage/Storage Space

Front Garden

Rear Garden

Off Street Parking



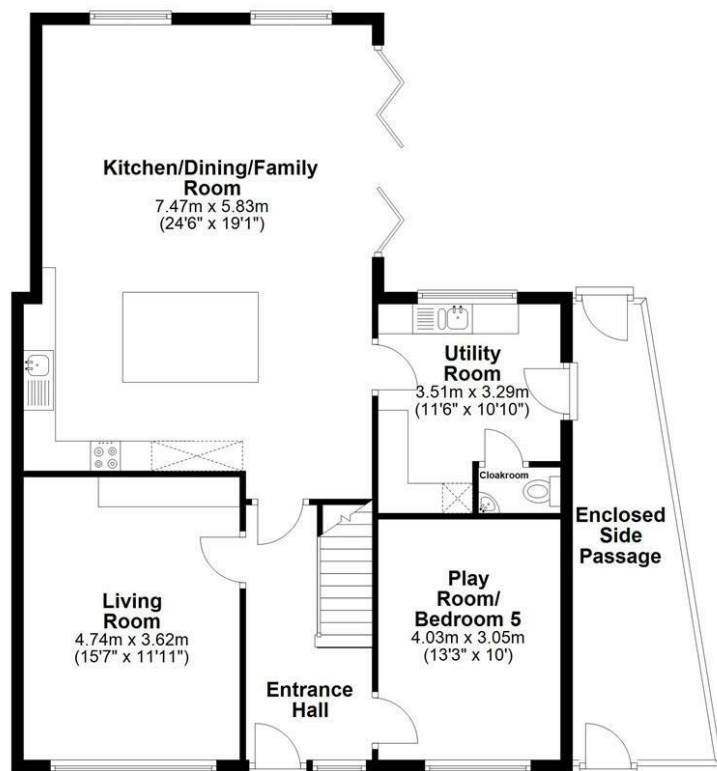
Directions



Floor Plan

Ground Floor

Approx. 95.3 sq. metres (1025.8 sq. feet)



First Floor

Approx. 69.2 sq. metres (745.2 sq. feet)



Total area: approx. 164.5 sq. metres (1771.0 sq. feet)

Sketch layout only. Not to scale. Plan produced for Whittaker & Co.

Plan produced using PlanUp.

These particulars, whilst believed to be accurate are set out as a general outline only for guidance and do not constitute any part of an offer or contract. Intending purchasers should not rely on them as statements of representation of fact, but must satisfy themselves by inspection or otherwise as to their accuracy. No person in this firm's employment has the authority to make or give any representation or warranty in respect of the property.

